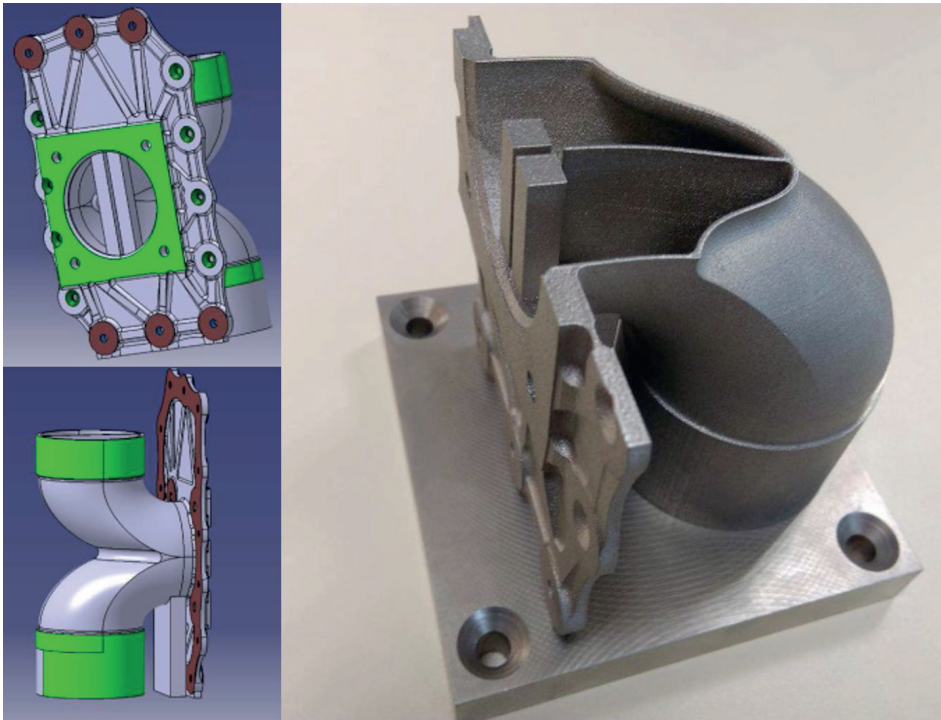
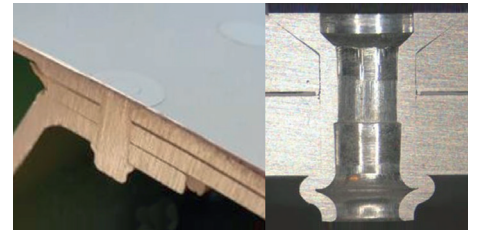


Material & Process Expertise

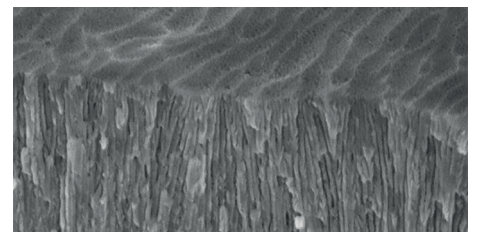
- Advanced materials and processes
- Characterization and standardization
- Qualification and industrial validation
- Weight saving and cost reduction
- Problem solving
- Process modelling and simulation



Cross section of part made by SLM additive manufacturing



Blind rivet automatic installation for polished application



SEM view of TSA layer on aluminium



ATL ply deposition prior to SQRTM curing



Fire testing on CFRP panel

A unique
and reliable
Material & Process
service

DIFFERENTIATORS

- Technical expertise and problem solving using innovative methodology
- Support to Research & Development proposal and project
- Material and process technology trade-off for new applications
- Product optimization for weight saving and cost reduction
- Characterization and qualification
- Industrial validation of materials, processes and specified parts
- Technical specification, test result analysis and final reporting.

We provide optimized combination of advanced materials and processes

SERVICE IDENTIFICATION

LOCATION

Gosselies, Belgium

EXAMPLES:

- Problem solving for spring application in automotive industry by a new material selection
- Development of sealing solutions for railway shelters
- R&D on lightweight engine cowling application using innovative concept and manufacturing processes
- Surface quality assessment of aluminium sheets protected with new REACH compliant surface treatment for an industrial manufacturer
- Composite part qualification according to Airbus specification for a Belgian SME

CUSTOMERS

Aleris, Alstom, Audi, CMI, ESA, JDC, Safran...

QUALIFICATIONS

- EN 9100
- ISO 14001

CONTACT:

Alexandre CRESPO

Engineering Services - Material and Process Expertise Manager
T +32 71 25 51 53 | alexandre.crespo@sonaca.com

Jean-Louis MAGERMAN

Engineering Services Manager - Prototype and Test Center
T +32 71 25 54 44 | M +32 474 977 801
jean.louis.magerman@sonaca.com

www.testcenter.sonaca.com

VALUE STREAM MAPPING

- 1 Problem solving
- 2 Research and Development
- 3 Technology trade-off
- 4 Product optimization
- 5 Characterization and standardization
- 6 Qualification and industrial validation
- 7 Technical reporting

GLOBAL FOOTPRINT

SONACA GROUP HEADQUARTERS

- Engineering - R&D Center
- Advanced Composite Process
- Additive Manufacturing (FMAS)
- Complex Assembly
- Manpower: 1650

SONACA SPACE GMBH

- Thermal Engineering & CFD
- Acquisition in 2016
- Manpower: 25

SINELSON

- Assembly
- Manpower: 40

LMI

- Acquisition in progress

SONACA MONTREAL

- Long Bed Machining
- Stringer Milling & Forming
- Manpower: 320

SONACA AIRCRAFT

- JV with TAF
- General Aviation
- 2 seats S200 AC

SONACA TRANSYLVANIA

- HLU Composite
- Assembly
- Manpower: 30

AERO FORMING TRANSYLVANIA

- Large sheet forming
- Start in 2018

SOBRAER

- Engineering
- Assembly
- Manpower: 260

SOPEÇAERO

- Small Sheet Forming
- Manpower: 85

PESOLA

- Small Machining
- Manpower: 50

